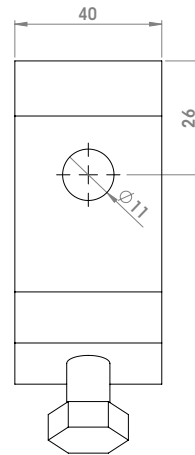
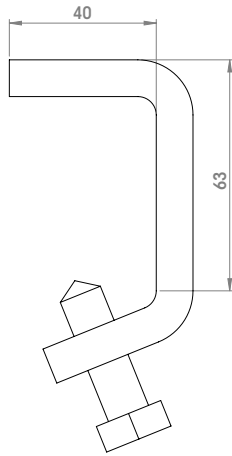
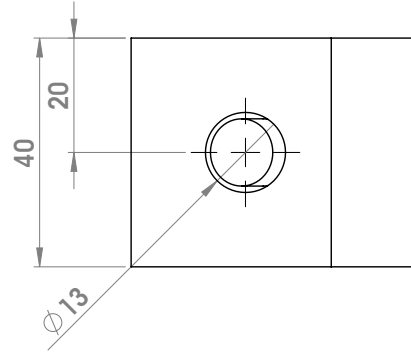
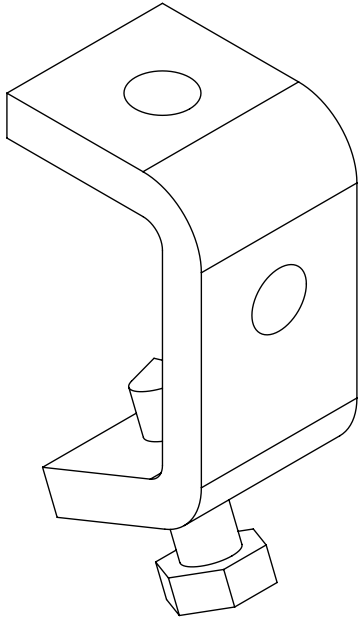


FITTING PLATES

P1271



CODE	DESCRIPTION	THICKNESS[mm]	MATERIAL
P12715ZE	Beam Clamp	5,0	ZE
P12716ZE	Beam Clamp	6,0	ZE
P12715ZC	Beam Clamp	5,0	ZC
P12716ZC	Beam Clamp	6,0	ZC

Available also in Stainless steel A304 and A316

Legend:
 ZE= GALVANIZED
 ZC= HOT DIP GALVANIZED