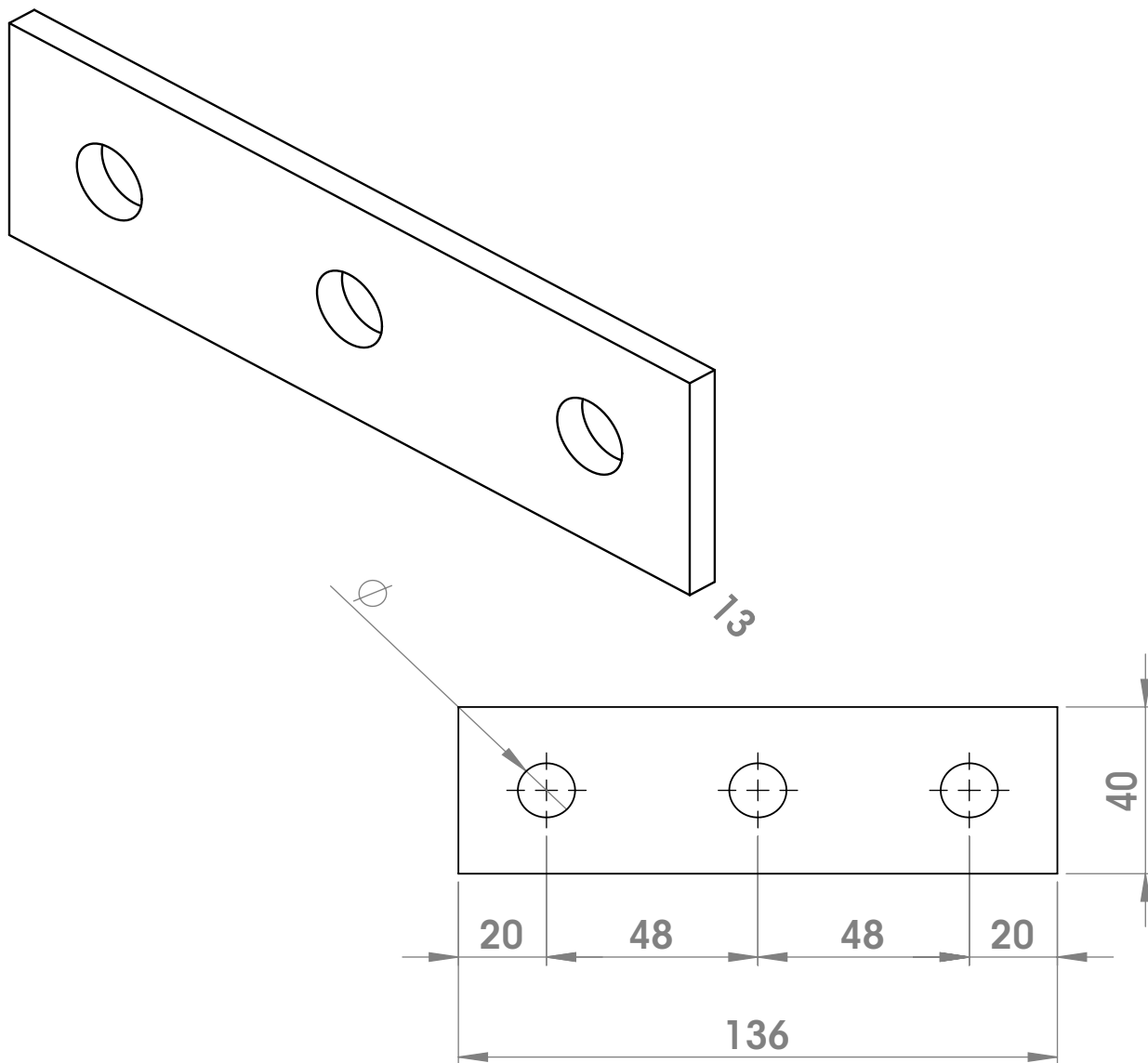


# FITTING PLATES

P1066



CODE	DESCRIPTION	THICKNESS[mm]	MATERIAL
P10665ZE	Flat Fitting	5,0	ZE
P10666ZE	Flat Fitting	6,0	ZE
P10665ZC	Flat Fitting	5,0	ZC
P10666ZC	Flat Fitting	6,0	ZC

Available also in Stainless steel A304 and A316

Legend:

ZE= GALVANIZED

ZC= HOT DIP GALVANIZED