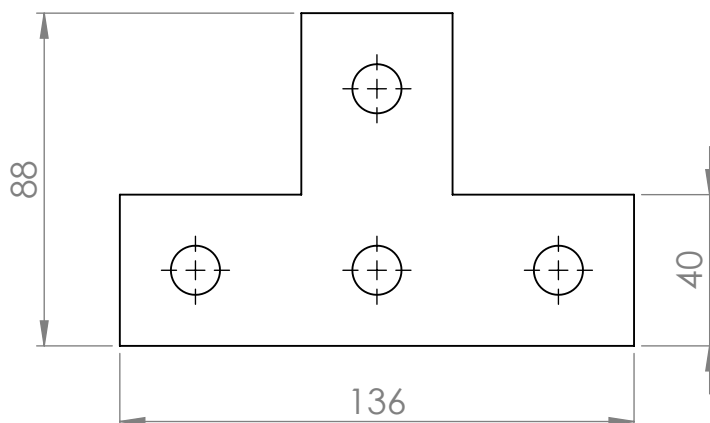
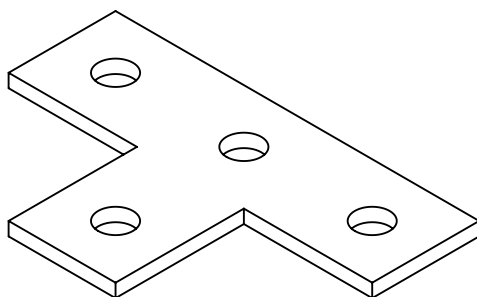


FITTING PLATES

P1031



CODE	DESCRIPTION	THICKNESS[mm]	MATERIAL
P10315ZE	Flat Fitting	5,0	ZE
P10316ZE	Flat Fitting	6,0	ZE
P10315ZC	Flat Fitting	5,0	ZC
P10316ZC	Flat Fitting	6,0	ZC

Available also in Stainless stell A304 and A316

Legend:

ZE= GALVANIZED

ZC= HOT DIP GALVANIZED